

BENSON POLYTECHNIC H.S. MPC #13 / NOV 2, 2017

AGENDA /

25 min

Welcome Back & Update

Process Update (PPS/Bassetti)

- + Bond Program Schedule
- + Where we left off and where we are today
- + Student engagement update
- + Phasing Overview

15 min

Industry Outreach Overview

Industry Outreach Approach (10 min)

- + One-on-One meetings
- + Academy Sessions
- + Industry Event and Wrap-Up

Introduction to Toolkit (5 min)

40 min

Driving Questions Activity

5 min

Public Comment

5 min

Wrap-Up

PROCESS UPDATE / PORTLAND PUBLIC SCHOOLS



PORTLAND PUBLIC SCHOOLS

The Way Ahead

	year 1	year 2	year 3	year 4	year 5	year 6	year 7	year 8	
Major 2017 Bond Project	2017	2018	2019	2020	2021	2022	2023	2024	
Benson					p		x	x	x
Lincoln				p				x	
Madison			p				x		
Kellogg			p			x			
	planning					2020 vote			
	design		Marshall available			p = permit + bid			
	construction					x = school opens			
	potential								



PROJECT SCHEDULE /

10/31/2017

LEVEL OF STAKEHOLDER PARTICIPATION

CTE ED SPEC - INDUSTRY OUTREACH

Industry / Professional Connections

CTE Program focus groups

Industry Connection Event

DESIGN ADVISORY GROUP

PROGRAMMING & DESIGN PHASES

Programming

Schematic Design

Design Development

Construction Documents

CONSTRUCTION PHASES

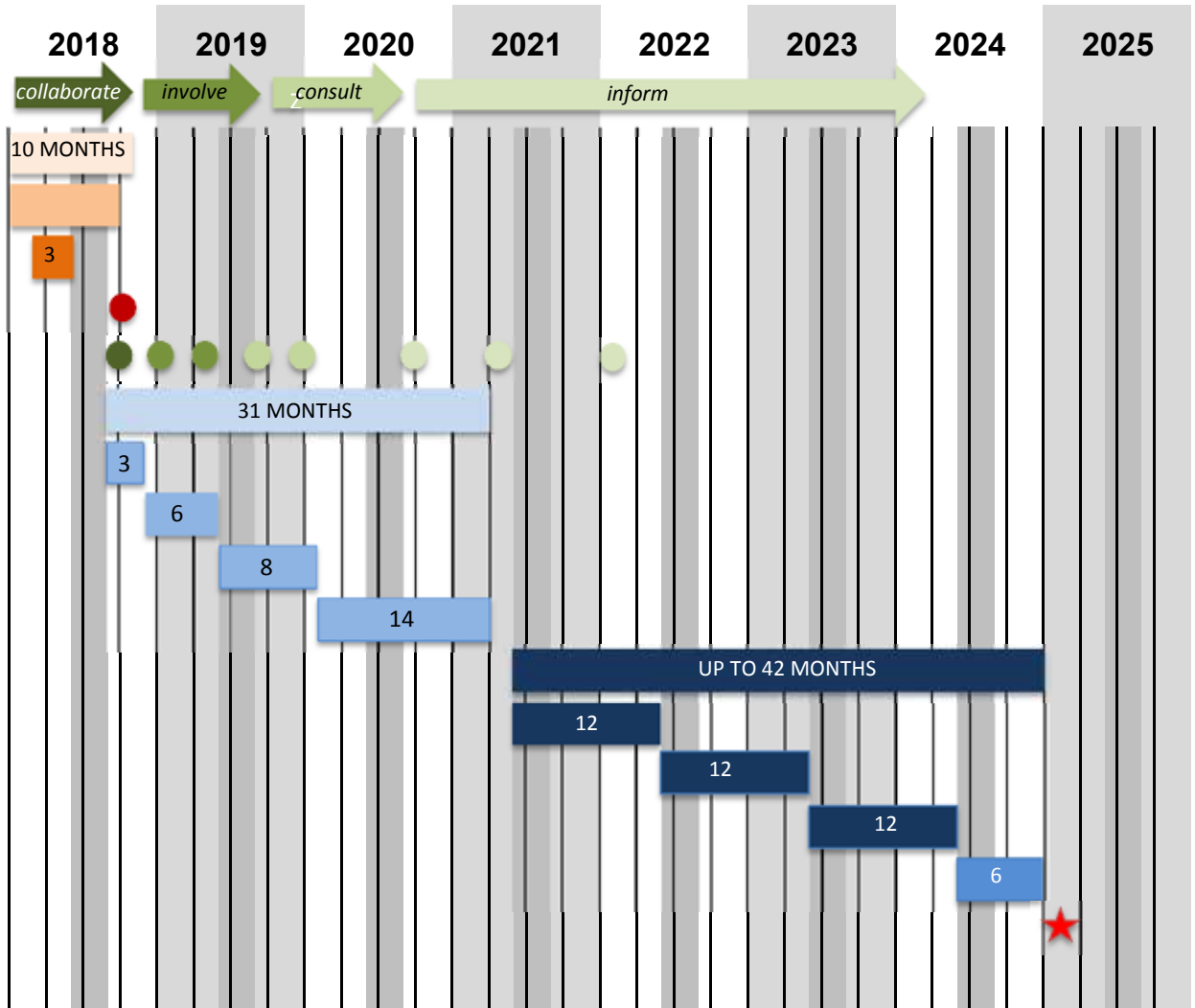
Phase 1: South

Phase 2: North / Northeast

Phase 3: West / Northwest

Phase 4: West Exterior / Landscape / Main entry

GRAND OPENING

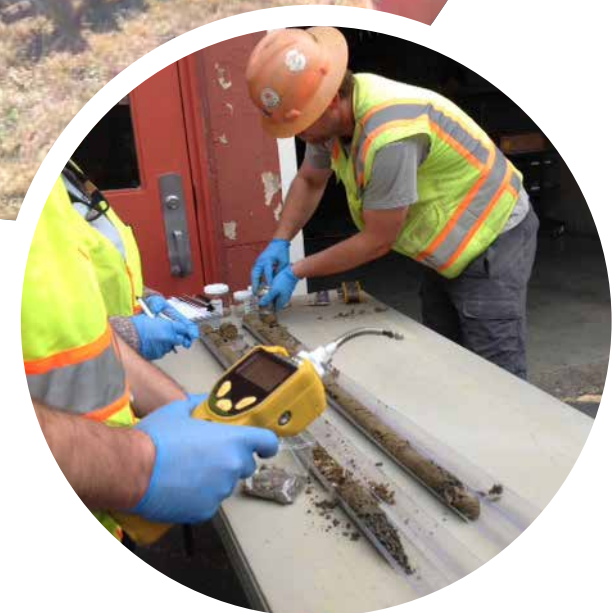


WHERE WE LEFT OFF

- + Pre-Diligence Report
- + Educational Specification
- + Design Refinement - Scheme L.1
- + Advisory Survey Input

TASKS SINCE BOND APPROVAL

- + Key Meetings:
 - + State Historic Preservation Office (SHPO)
 - + Portland Landmarks Commission
 - + Review with PPS Departments, Office of Teaching and Learning and CTE
- + Existing Conditions Investigation:
 - + Phase II Environmental Report
 - + Geotechnical Testing
- + Student Engagement



PROCESS UPDATE / STUDENT ENGAGEMENT

WHERE WE LEFT OFF

- + Student information gathering at lunch period
- + Architecture Jr. class outreach

TASKS SINCE BOND APPROVAL

- + Architecture Sr. class project:
design of reimagined media center
and counseling / career center
- + Student-led artifact assessment report
- + School-wide student survey

UPCOMING

- + Tech Show 2018
- + Industry Outreach 2018
- + Design Advisory Group (DAG)
application: Late summer/fall 2018
- + Student engagement to start
in earnest in Fall 2018 for
programming and design.

*"I love
having the freedom
to build what I want"*
-Benson Student



*"We need
more windows....
and cooling"*
-Benson Student



ARTIFACT ASSESSMENT / OVERVIEW

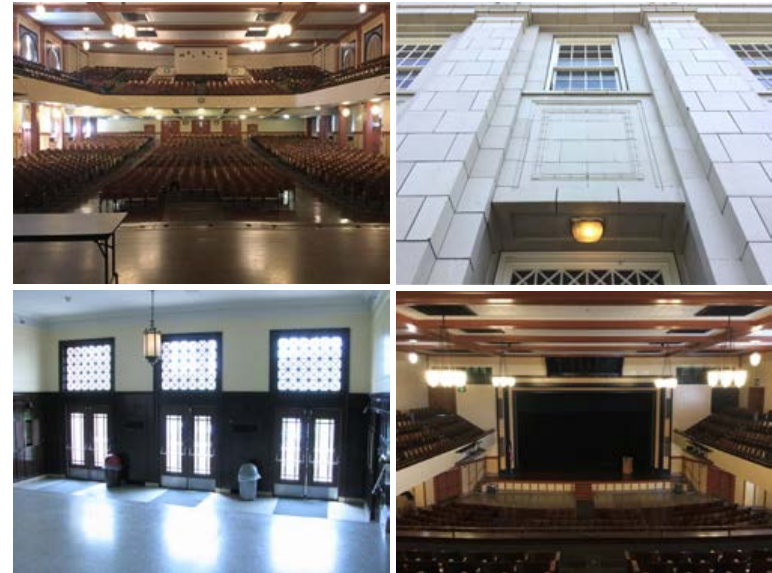
BENSON POLYTECHNIC HIGH SCHOOL ARTIFACT ASSESSMENT



ART AROUND BENSON

AUDITORIUM

The auditorium is rarely used. It is sometimes the venue for formal presentations, but is not normally accessible to students. During events, the balcony level seating is still unused because of the small student population. Several back staircases and the main lobby, including ticket booths and decorative exterior stairs, are largely unused except for theater crew and the Portland International Scholars Academy (PISA), which uses rooms behind the auditorium as office space. Because it was built in the early days of the school, most of the auditorium building is richly decorated with original woodwork and light fixtures.



ARTIFACT ASSESSMENT / OVERVIEW

MURALS & QUOTES

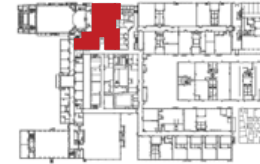
The back wall of the cafeteria contains several pieces of student art. They depict cartoon characters and students as well as a Benson gear and some text. There are also several inspirational quotes and adages painted on the walls. These pieces are fairly recent, some to within the last several years.

For lights and railings, see Materials section on pages 64-67.

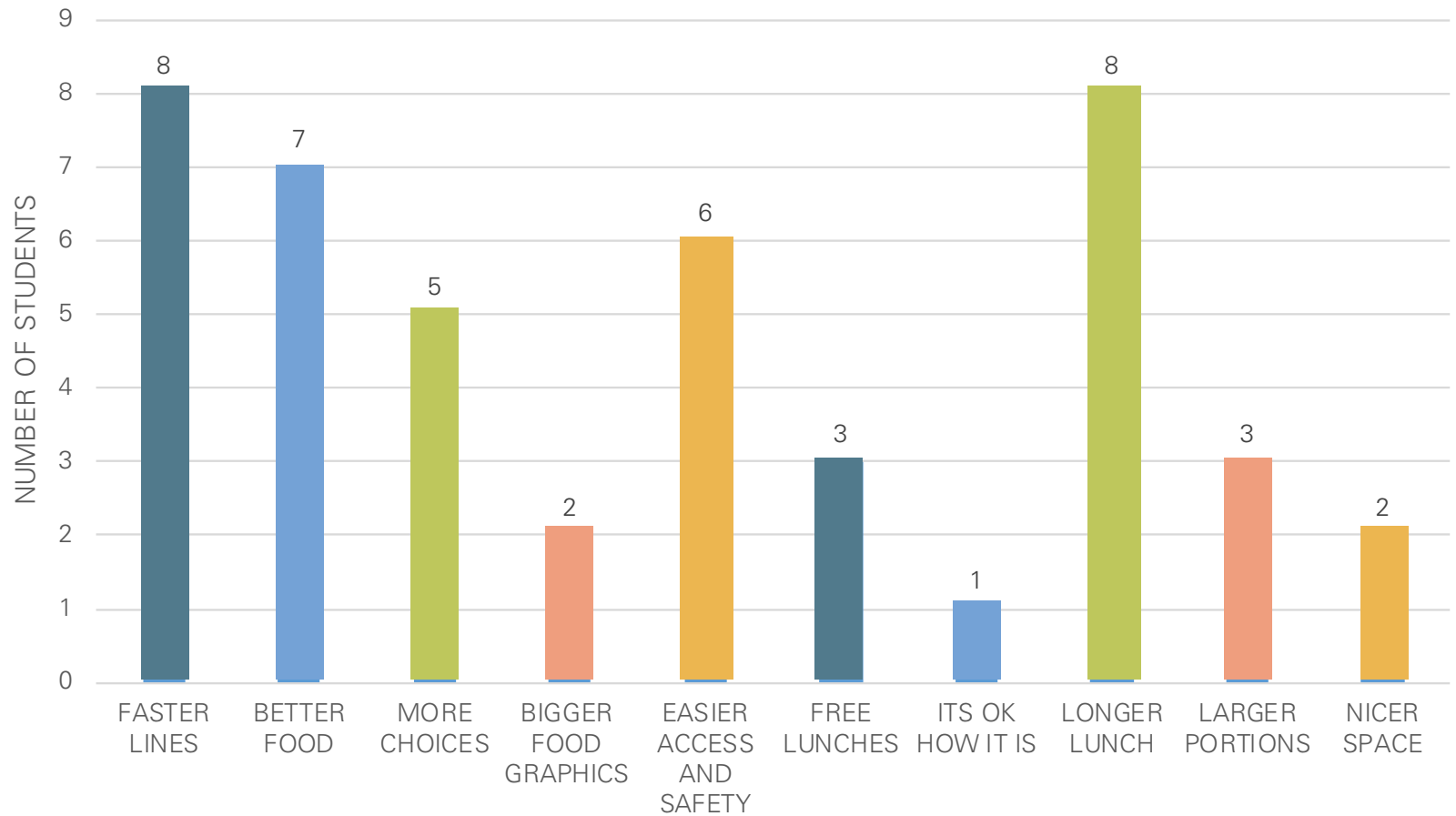


LIBRARY

Built in the 1991 addition, the library and media center furnishings are outdated, but in good condition. This area usually contains between ten and forty students working on computers or at central tables, and many students use the space to spend time with friends as well as work on assignments. The main entrance is from the science wing hallway, and the library is within close access of the front hall, the counseling center, and the second floor.



WHAT WOULD MAKE YOUR LUNCH EXPERIENCE MORE ENJOYABLE AND CONVENIENT?



FACTORS THAT WOULD MAKE LUNCH MORE ENJOYABLE

OTHER:

- + If the food wasn't from school
- + If microwaves were provided

- + If the space was more sanitary
- + If it was less crowded

WHAT DO YOU LIKE OR DISLIKE ABOUT THE IMAGES OF THE COMMONS?



A

MOST POPULAR ANSWERS FOR:

I LIKE...

- + The open space (10)
- + The big windows (4)
- + The modern look (3)
- + Image A (3)
- + The booths (2)
- + Image C (1)

OTHER ANSWERS FOR:

I LIKE...

- + "When there aren't too many people and enough tables"
- + "That there are multiple levels and you can see stuff out the windows. It seems cool"
- + "How it's very open and welcoming and it looks like a comfortable environment"
- + "How the first thing you see is the cafeteria"



B

MOST POPULAR ANSWERS FOR:

I DISLIKE...

- + How crowded it looks (5)
- + Nothing (4)
- + The modern look (1)
- + Small tables (1)
- + Image A (1)
- + Image B (1)
- + Image C (1)

OTHER ANSWERS FOR:

I DISLIKE...

- + "Too much wood, not enough glass or metal"
- + "How we don't have the budget to create this vision. Even if we do, it's under the Auditorium and if we really want to have a bigger common area, we need to have space for it."



C

MOST POPULAR ANSWERS FOR:

I THINK IT'S MISSING...

- + More tables (3)

OTHER ANSWERS FOR:

I THINK IT'S MISSING...

- + A hot lunch line
- + A trash system
- + Vending machines
- + Microwaves
- + Outside opportunities
- + Some entertainment
- + Glass and metal



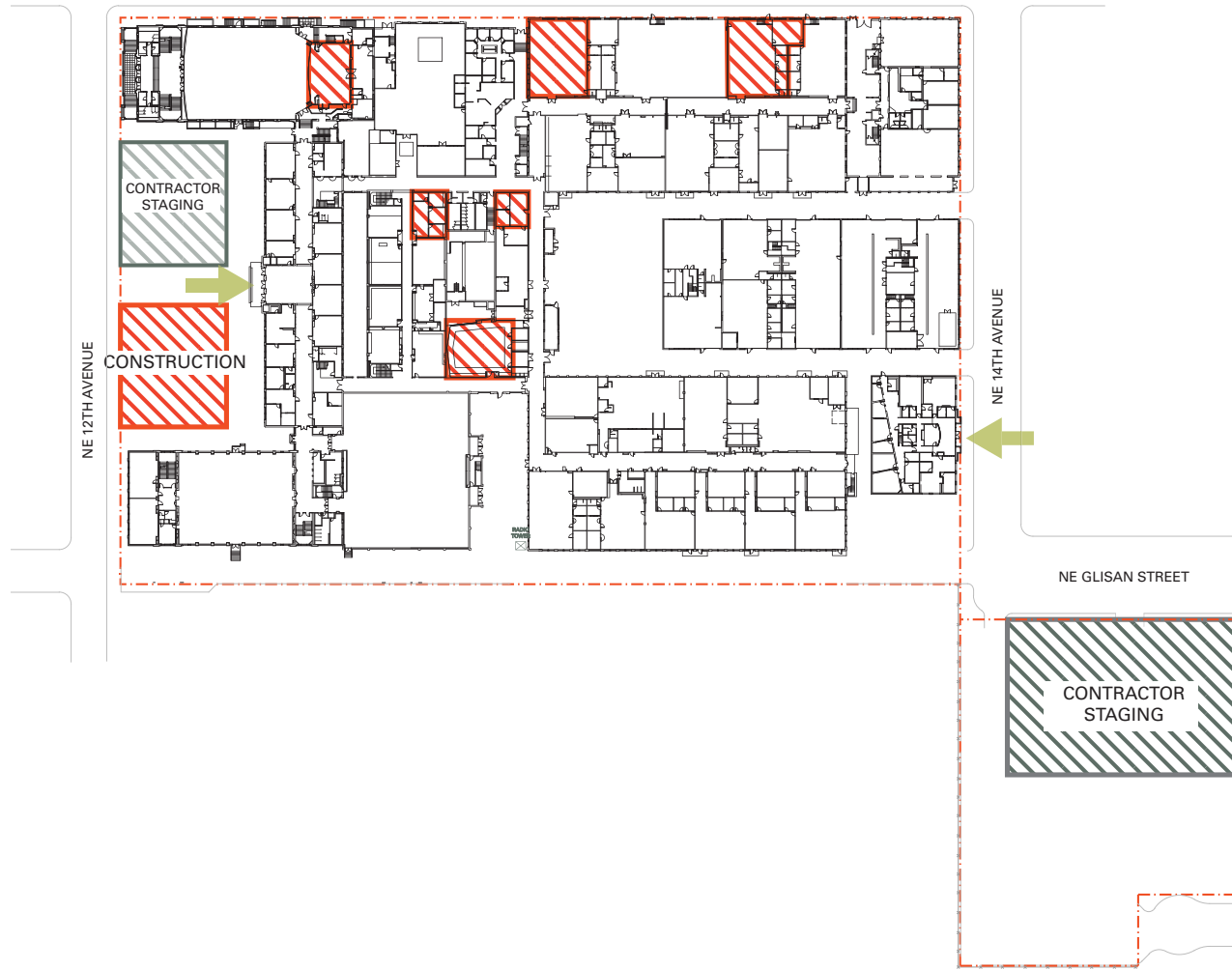
D

OTHER COMMENTS...

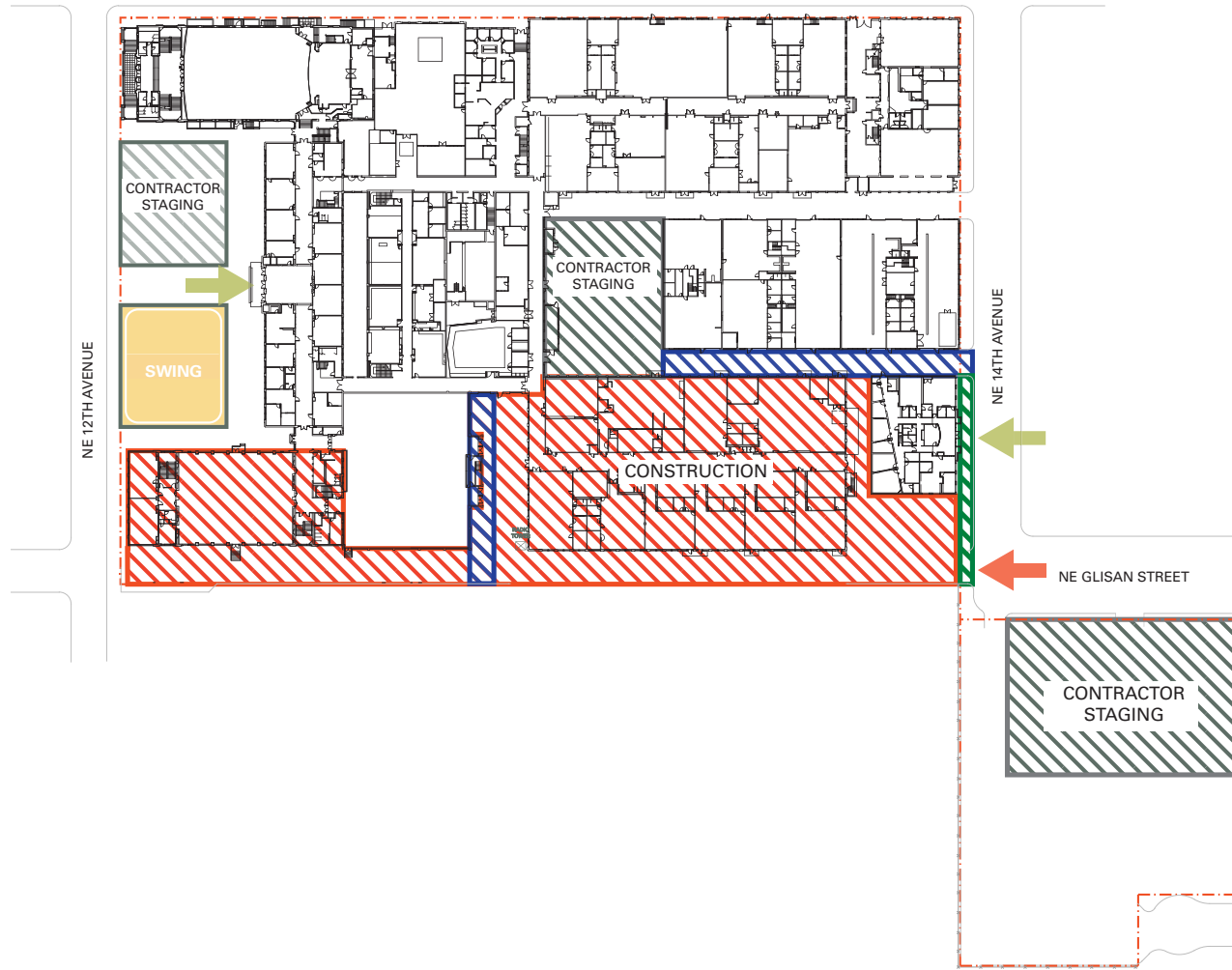
- + "Feels like most of them would run out of space quickly."
- + "Make our lunch commons like picture B."
- + "If we were to build a common area for Benson, we either have to redo the whole cafeteria OR locate it to a new location, but then again, that would be difficult finding the space for that."

PRELIMINARY PHASING STUDY /

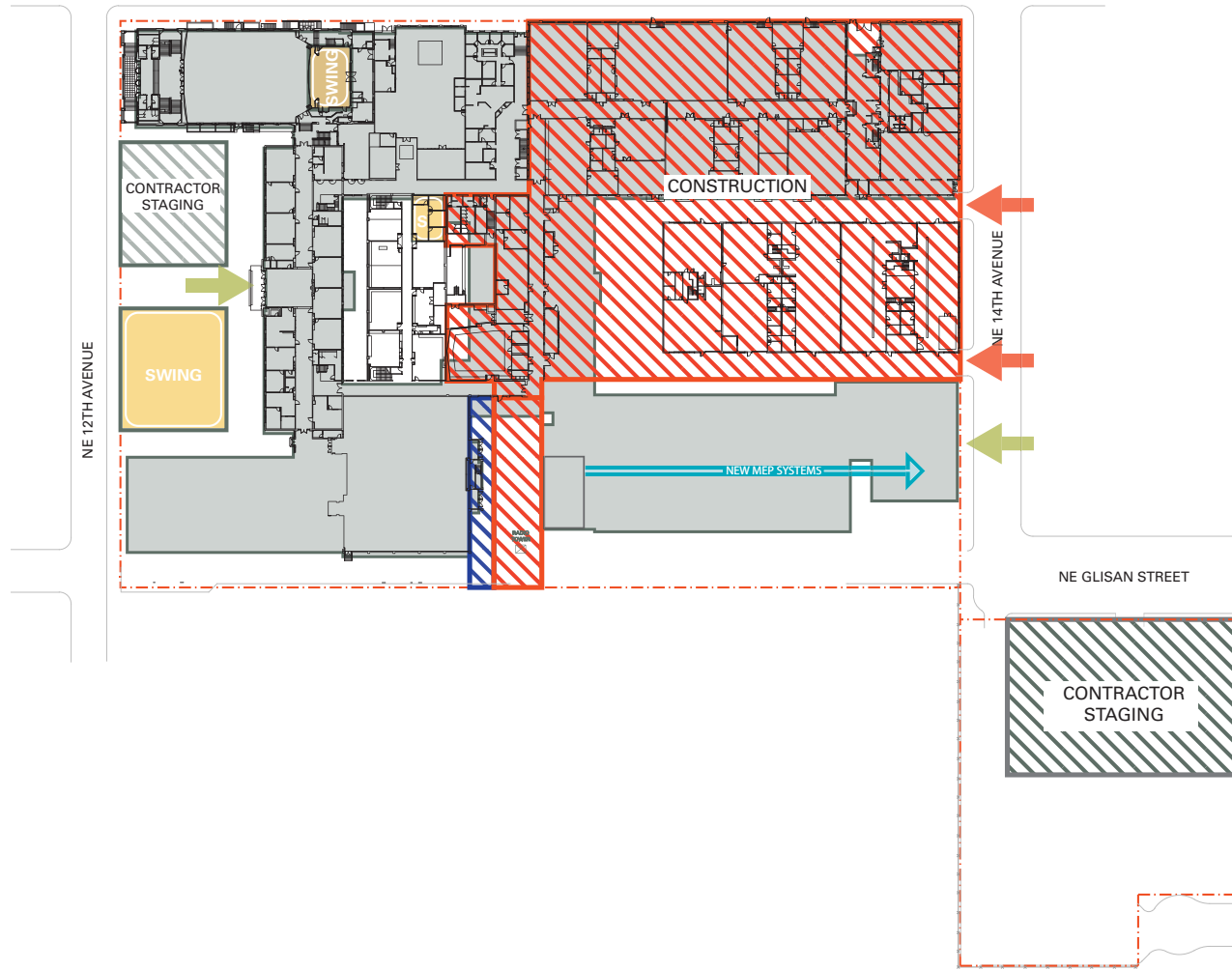
PHASING STUDY / PHASE 1A (SPRING 2021)



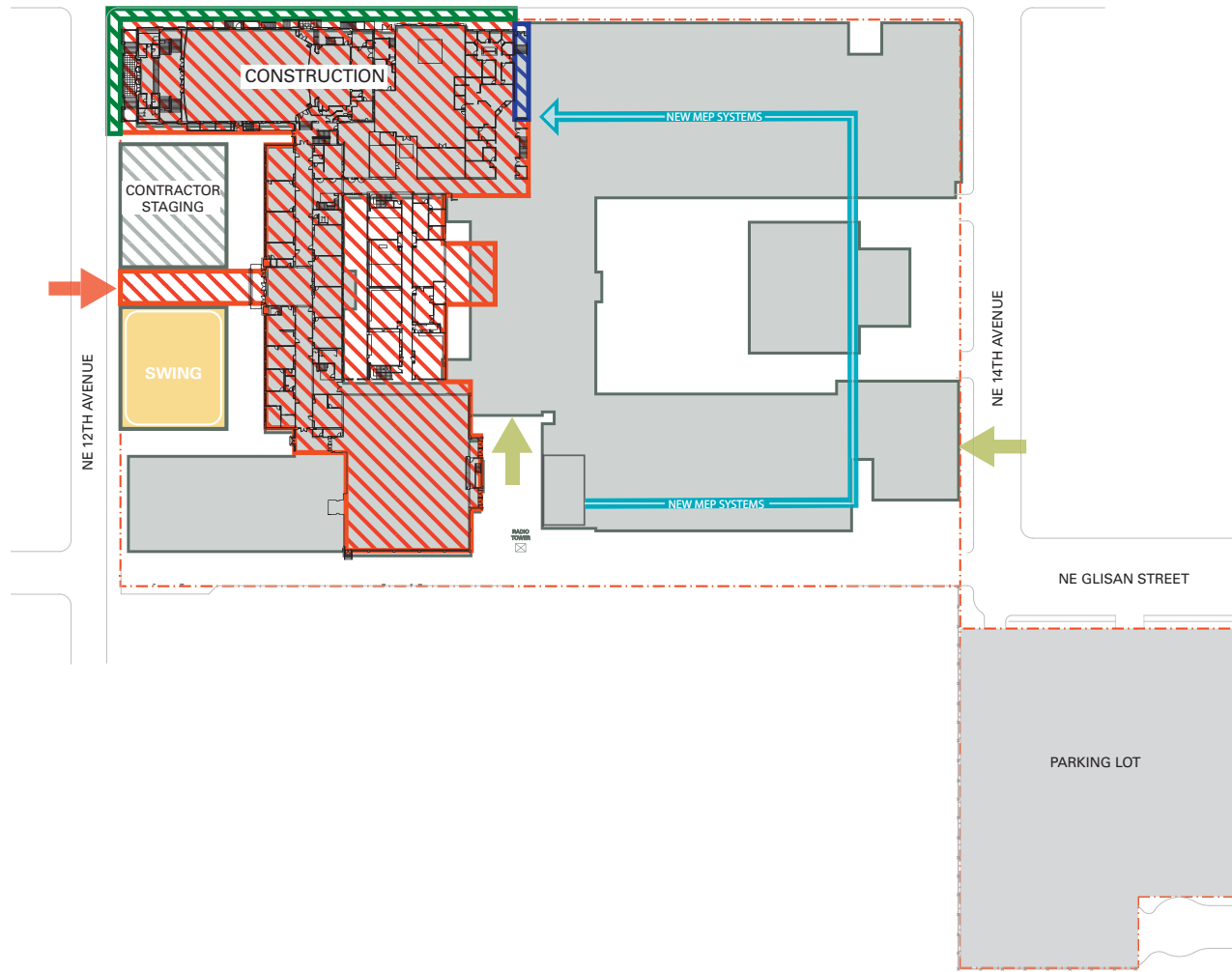
PHASING OVERVIEW / PHASE 1B (JUN 2021 - AUG 2022)



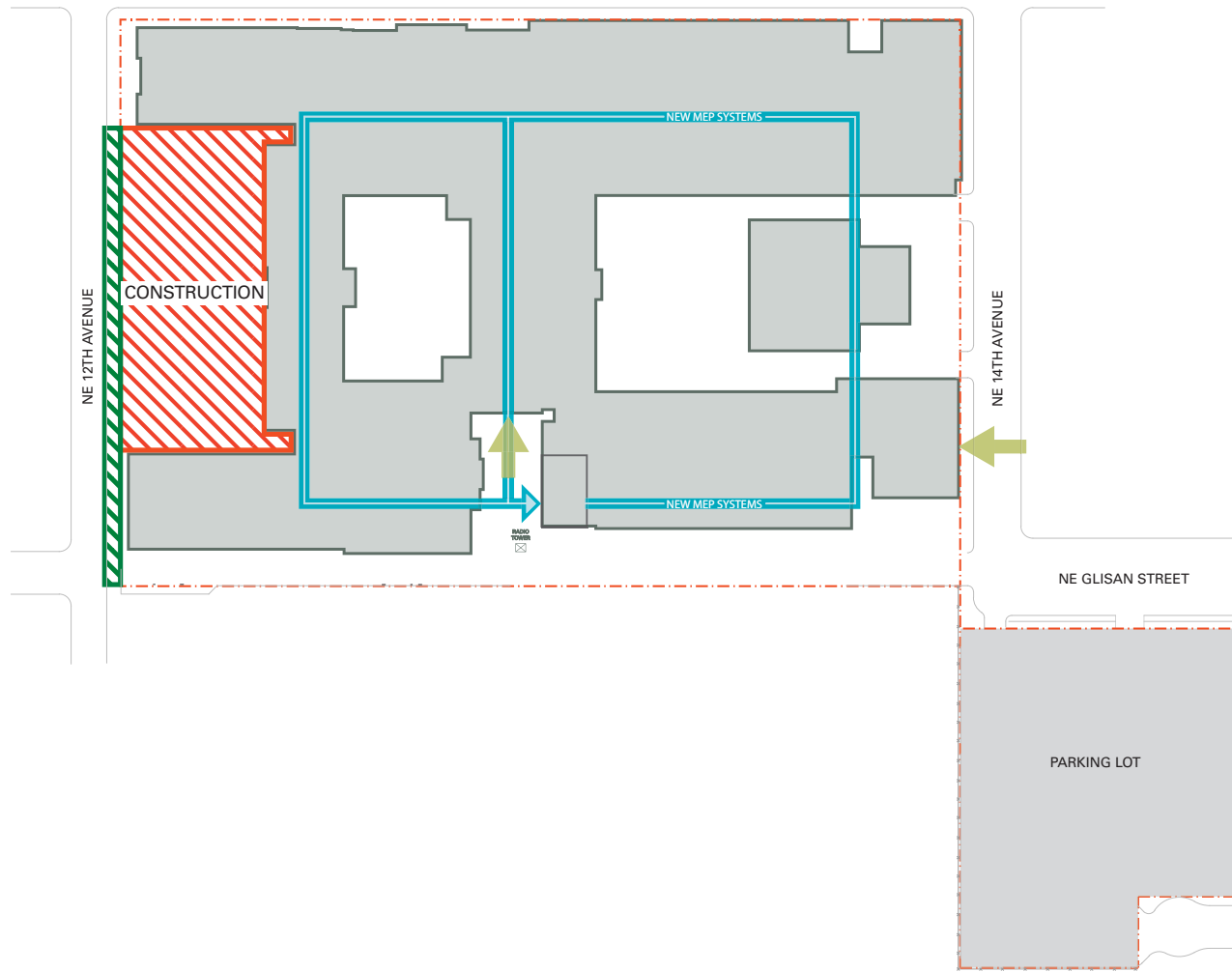
PHASING OVERVIEW / PHASE 2 (SEPT 2022 - AUG 2023)



PHASING OVERVIEW / PHASE 3 (SEPT 2023 - AUG 2024)

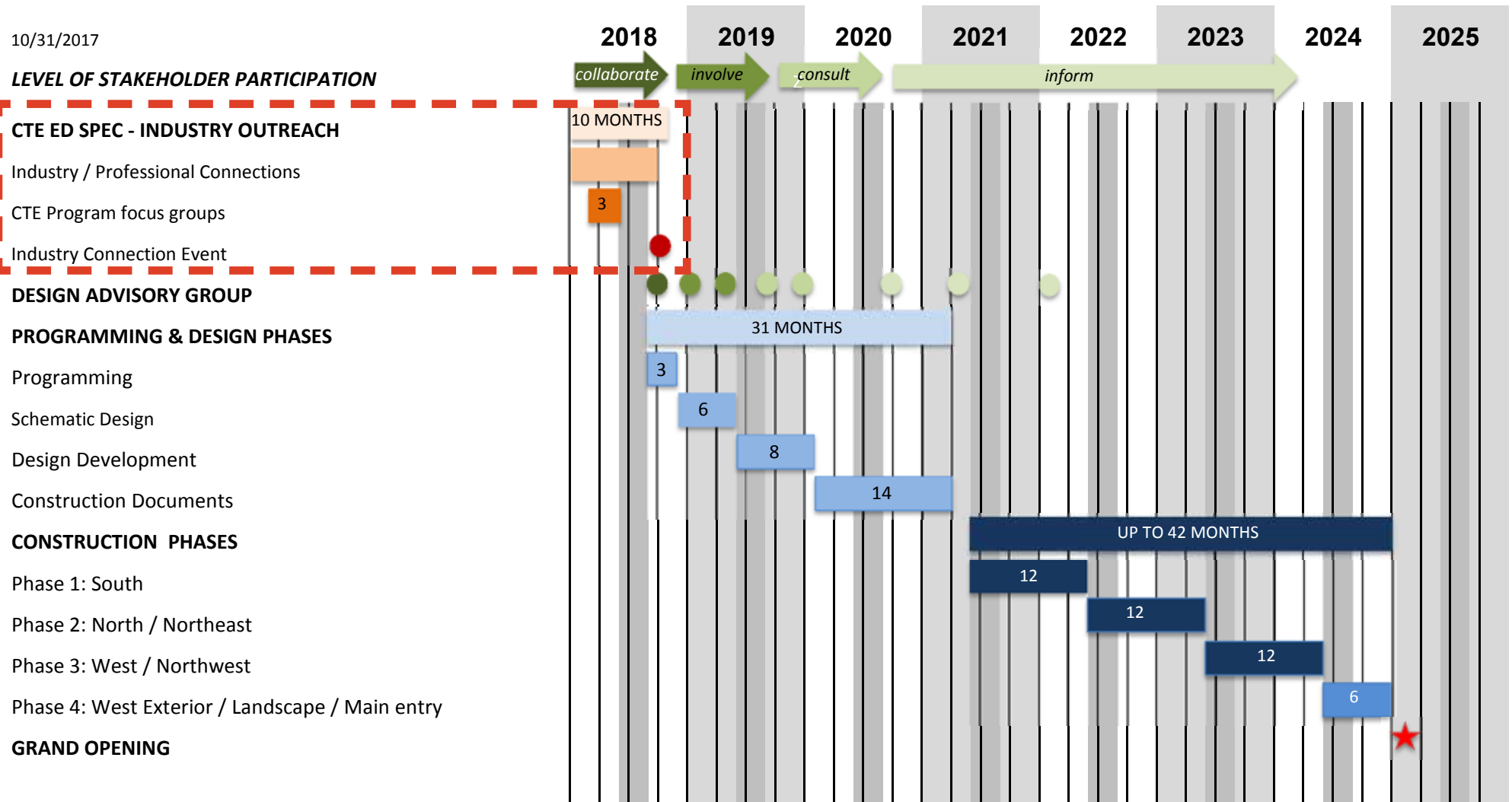


PHASING OVERVIEW / PHASE 4 (AUG 2024 - DEC 2024)



INDUSTRY OUTREACH APPROACH / SMALL GROUP ACTIVITY

INDUSTRY OUTREACH APPROACH / OVERVIEW



ONE-ON-ONE MEETINGS

November 2017 – September 2018

Goal: Receive counsel on what/how to tap new ideas & thinking when undertaking the modernization of Benson.

These one-on-one meetings will help frame our work when we have our Academy Sessions in Spring, 2018, as well as give us hands-on opportunities to seek additional feedback after the Academy Sessions have occurred.

We will engage in a series of One-on-One meetings with core business leaders/influencers across the CTE programs offered at Benson. We will work closely with Benson Alumni as well as the Advisory Groups in identifying and securing these meetings. We would like to have at least one meeting per CTE program for a total of at least 11 meetings but likely will have many more than that over those months.

ACADEMY INDUSTRY SESSIONS

March – May 2018

Goal: Garner key input from industry leaders and influencers with the purpose of having that information help inform the redesign of the program space at Benson as part of the modernization efforts.

In the Spring of '18, we plan to convene three sessions focused around the core areas of study in the three Benson Academies:

Late March 2018 (after Tech Show but not during Spring Break)

Arts & Communications Technology Academy

April 2018

Industry & Engineering Academy

May 2018

Health Science Academy

INDUSTRY EVENT / DAG KICK-OFF MEETING

Late September 2018

Goal: Share what we learned, provide an opportunity for Bassetti to offer some initial thoughts on how they might look to translate this information in the building's new design, and to garner excitement and momentum as the DAG process kicks into high gear.

After the start of the '18/'19 school year, we will reconvene all the participants from the Academy sessions the prior Spring, along with all the Design Advisory Group (DAG) members to kick off the DAG process with an All-In event.

ONE-ON-ONE MEETINGS

November 2017 – September 2018

BENSONTECH SHOW

March 2018

Goal: Attend the Tech Show with an eye to identifying industry partners who may want to participate in our upcoming Academy Sessions, as well as providing an opportunity to promote the Academy Sessions at this well attended event.

MPC OUTREACH

Goal: Provide tools for MPC members to assist with getting the word out about Benson Tech Modernization, Academy Sessions and Industry Event.

INDUSTRY OUTREACH APPROACH / TOOLKIT INTRODUCTION

TOOLKIT COMPONENTS

- + Online form that each person initiating an outreach opportunity can fill in.
Link to form to be sent to MPC members via email.
- + Template email asking prospect for a meeting
- + Template agenda for meeting
- + Template thank you note to send within one week following the meeting
- + Benson Tech Programs One-Pager
- + Benson Tech Modernization One-Pager
- + Information on how a partner can participate with Benson Tech and PPS

Benson Polytechnic CTE Professional/Industry Outreach

Please enter professional contact referrals for engagement in design planning for Benson Tech's Career & Technical Education (CTE) programs. This outreach effort will include a phone call, email or meeting during winter 2018 and attending a CTE program design session in spring 2018. These efforts will help inform planning for the upcoming Benson Tech High School design process.

Please fill out contact information for yourself or for your professional referral.

* Required

Email address *

Your email _____

Type of professional/industry connection: *

Affiliation *

College and Career Readiness

Our academies offer a rigorous course of study, skill building and apprenticeships in three high-demand careers areas, a range of majors.

Technology Academy

Technology

SMALL GROUP ACTIVITY / 20 MINUTES

SMALL GROUP ACTIVITY /

Break into small groups to explore ideas about how to best get feedback from community business leaders that will help ensure that we leverage community and industry partnerships as the modernization project for Benson Tech moves forward.

DRIVING QUESTIONS

- + What are the top three businesses or organizations in the community that you would suggest Bassetti meet with to get input on the planning and design of Benson Tech's Modernization? Why?

- + What questions would you ask industry leaders in the community in regards to:
 - + Information to be gathered at Academy Sessions?
 - + Opportunities for Modernization Partnerships?
 - + Opportunities for Long-Term Partnerships?

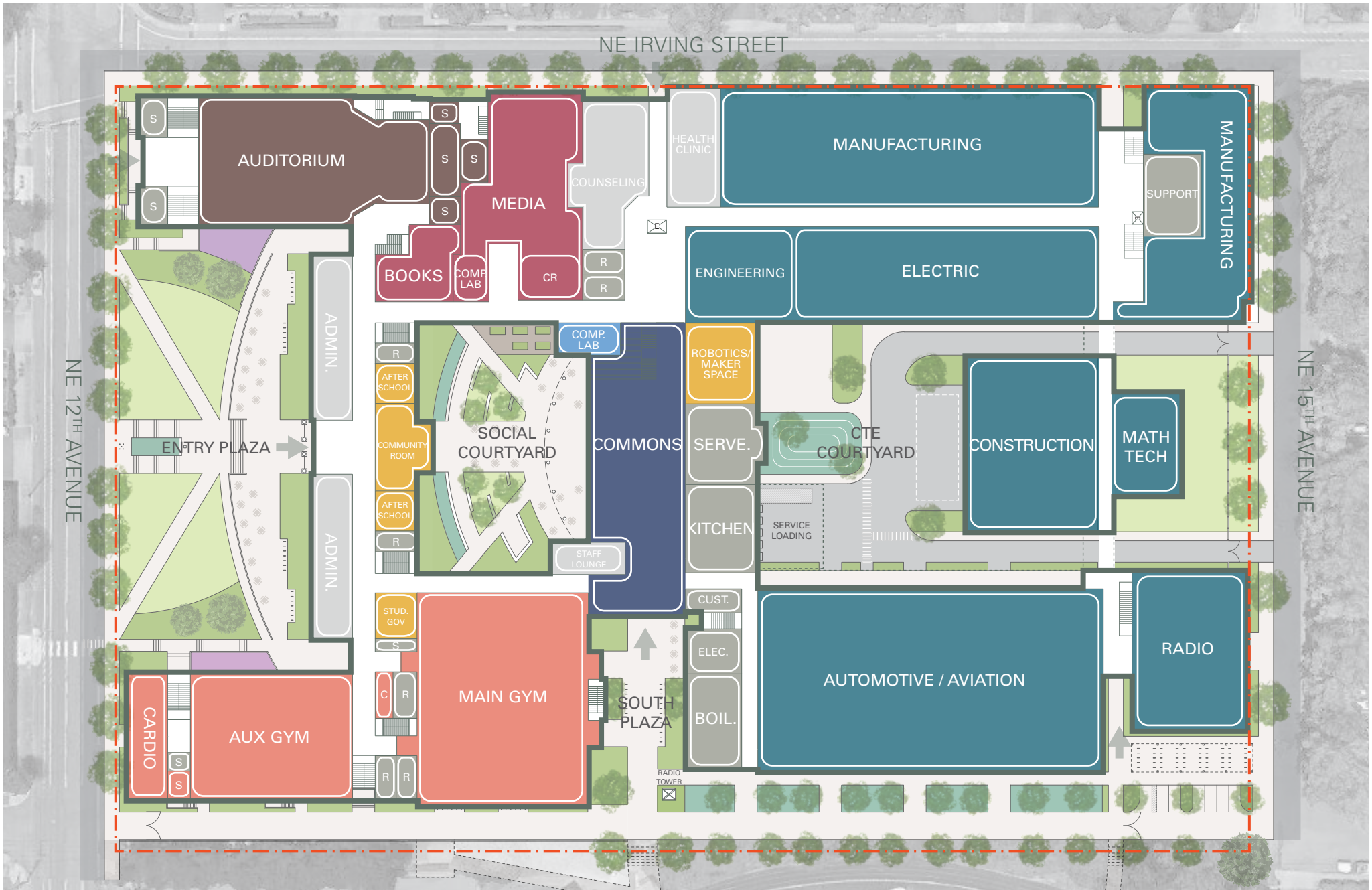
REPORT BACK / 20 MINUTES

PUBLIC COMMENT / 5 MINUTES

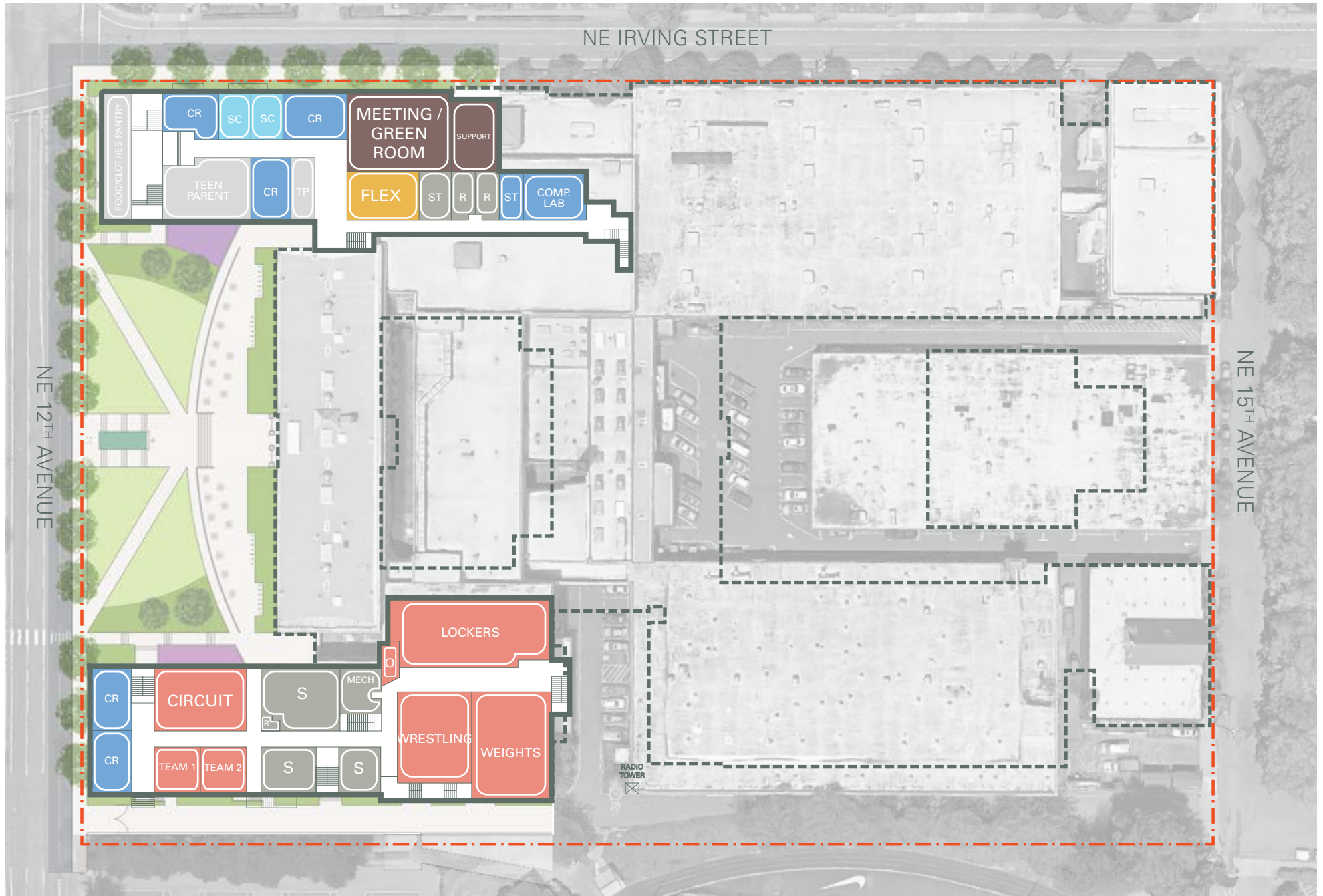
CLOSING THOUGHTS & NEXT STEPS / 5 MINUTES

THANK YOU. /

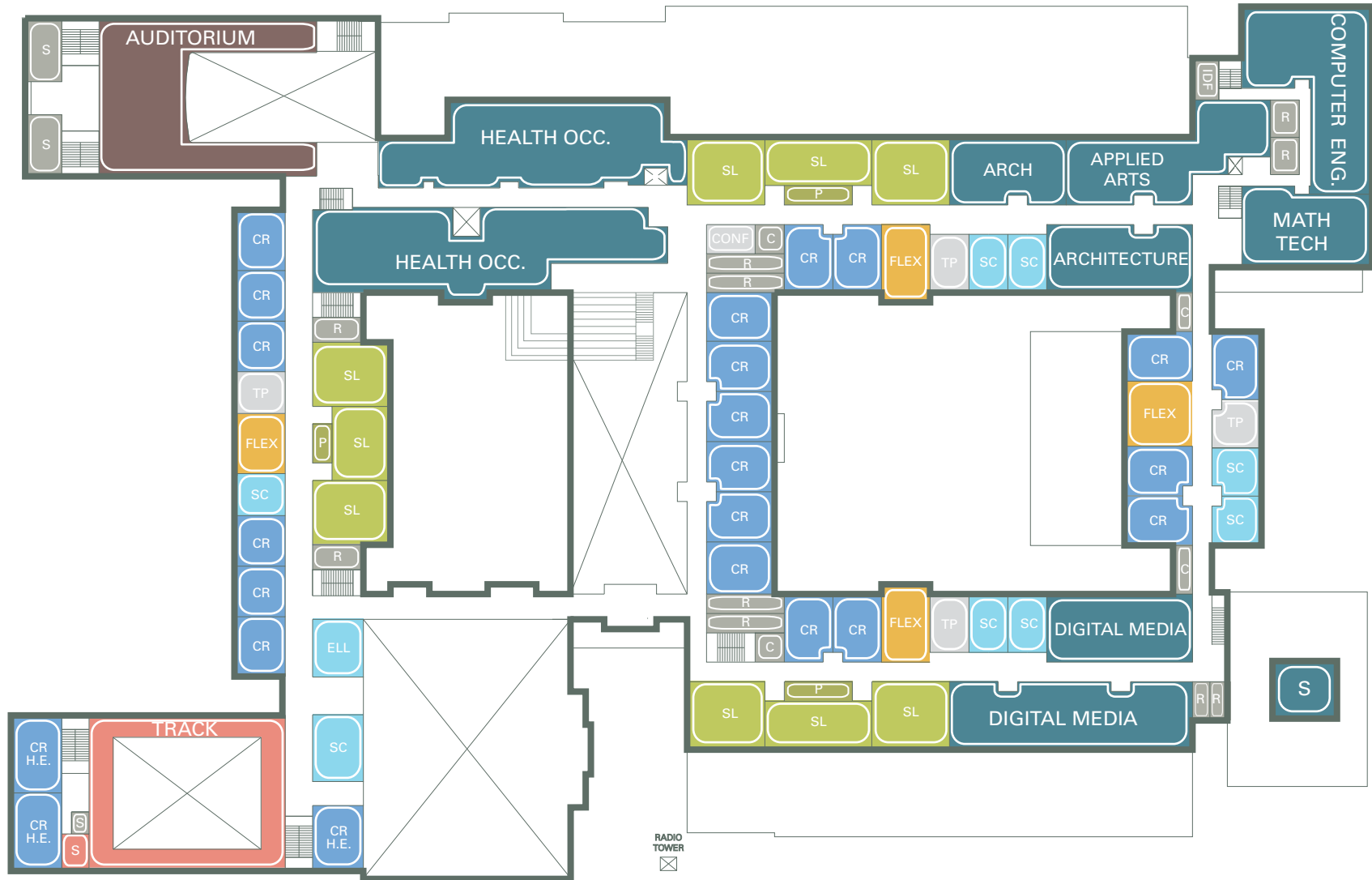
SCHEME L.1 / GROUND LEVEL



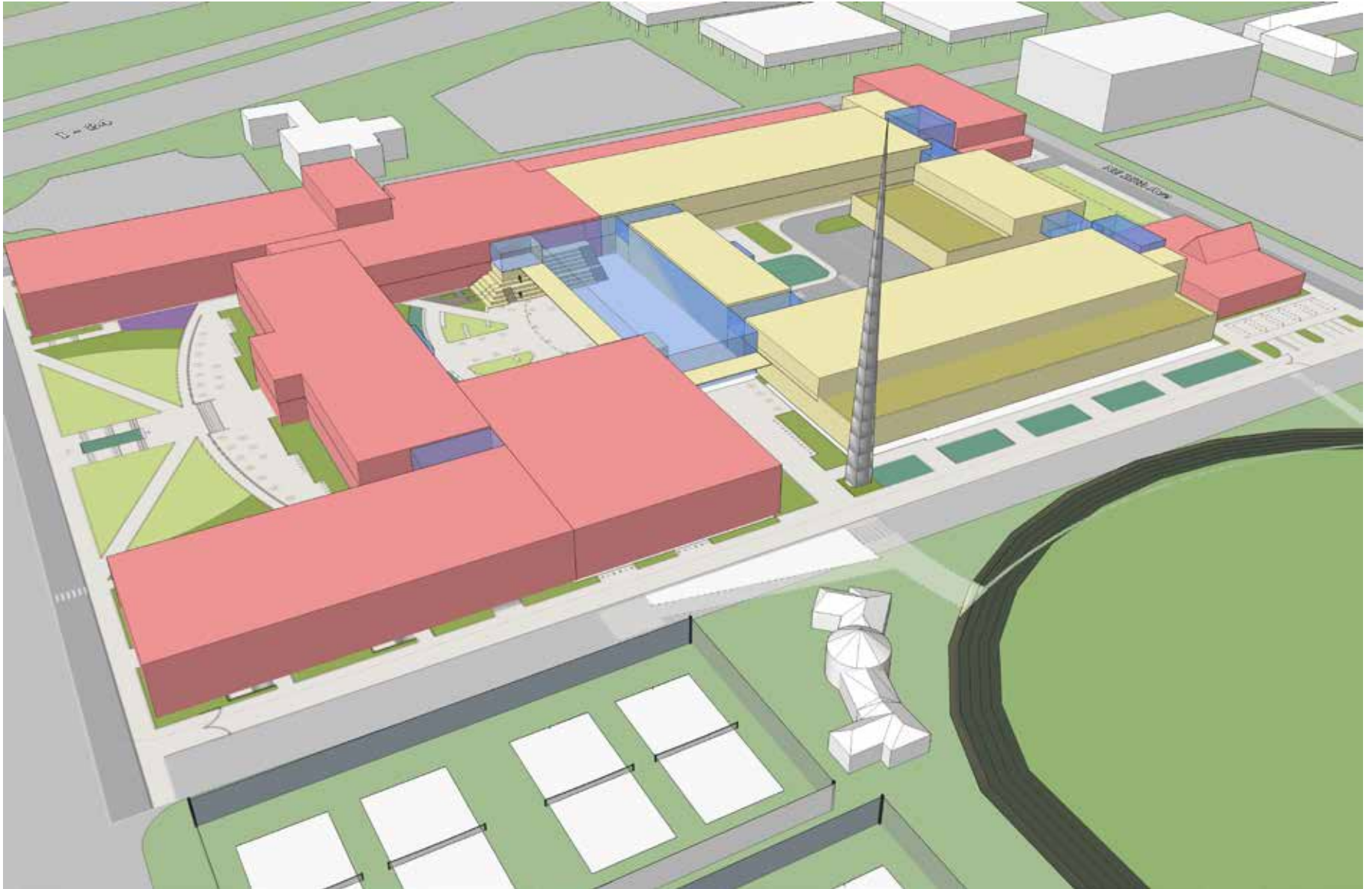
SCHEME L.1 / LOWER LEVEL



SCHEME L.1 / UPPER LEVEL

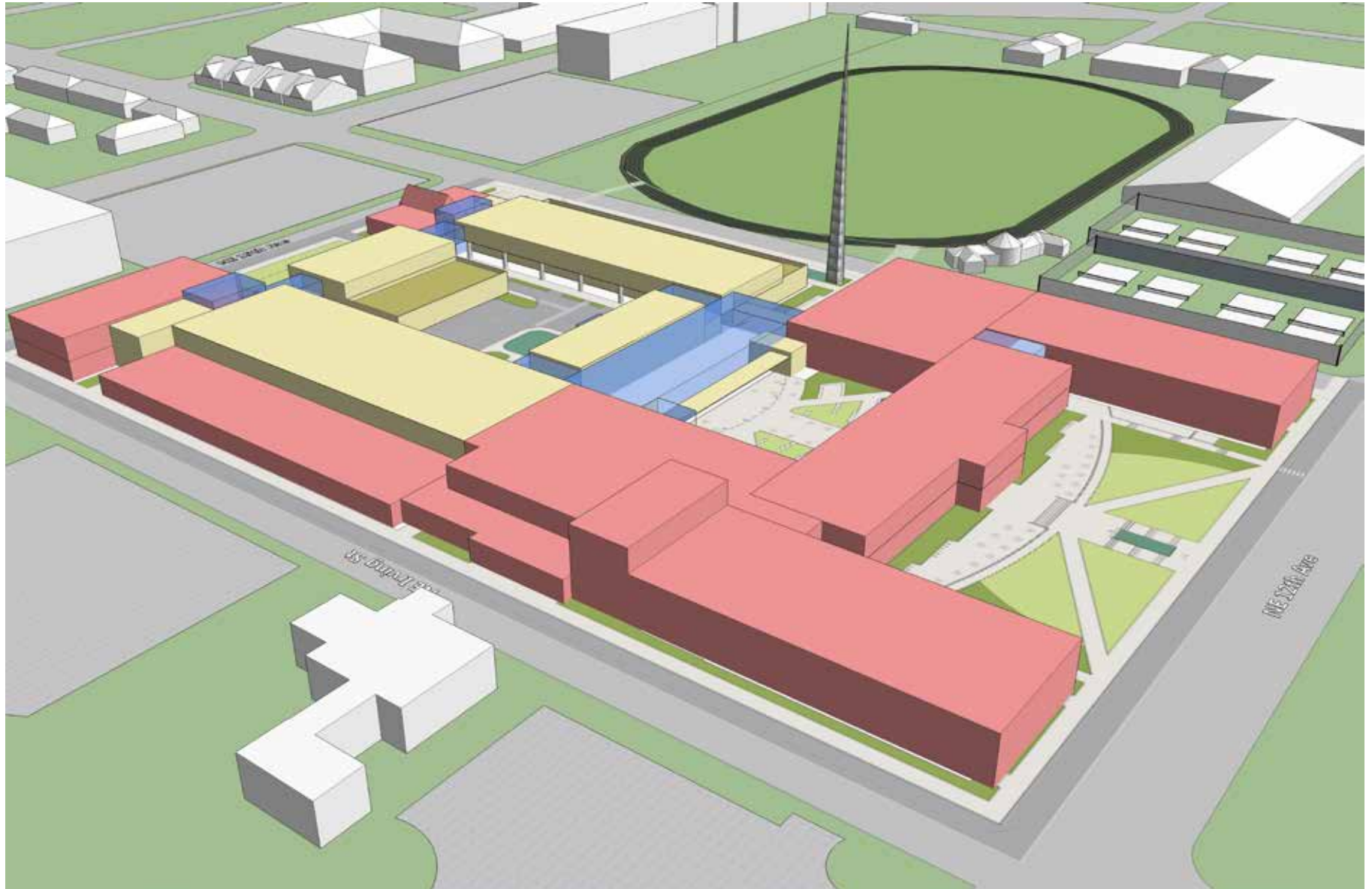


SCHEME L.1 / 3D MASSING



VIEW FROM SW

SCHEME L.1 / 3D MASSING



VIEW FROM NW

SCHEME L.1 / 3D MASSING



VIEW FROM NE

SCHEME L.1 / 3D MASSING



VIEW FROM SE